



**CURADLE 160**

IP Camera type

PX-ICU160C



Product name **[Camera Type] Curadle Smart incubator  
PRO PLUS 160C**

Manufacturer AUTOELEX

Brand CURADLE

Model PX-ICU160C [Camera Type]

Origin MADE IN KOREA



**The No.1 Choice  
for veterinary care  
and animal recovery**

MADE IN KOREA 

**This model is a camera type.**



## Reflects veterinarian's opinions taken at the product concept

Curadle Smart Pet Incubator ICU has been exported to more than 10 countries around the world including medical advanced countries like the USA, UK, Austria, Japan, etc., it is entirely different from other ICU-copied cages.

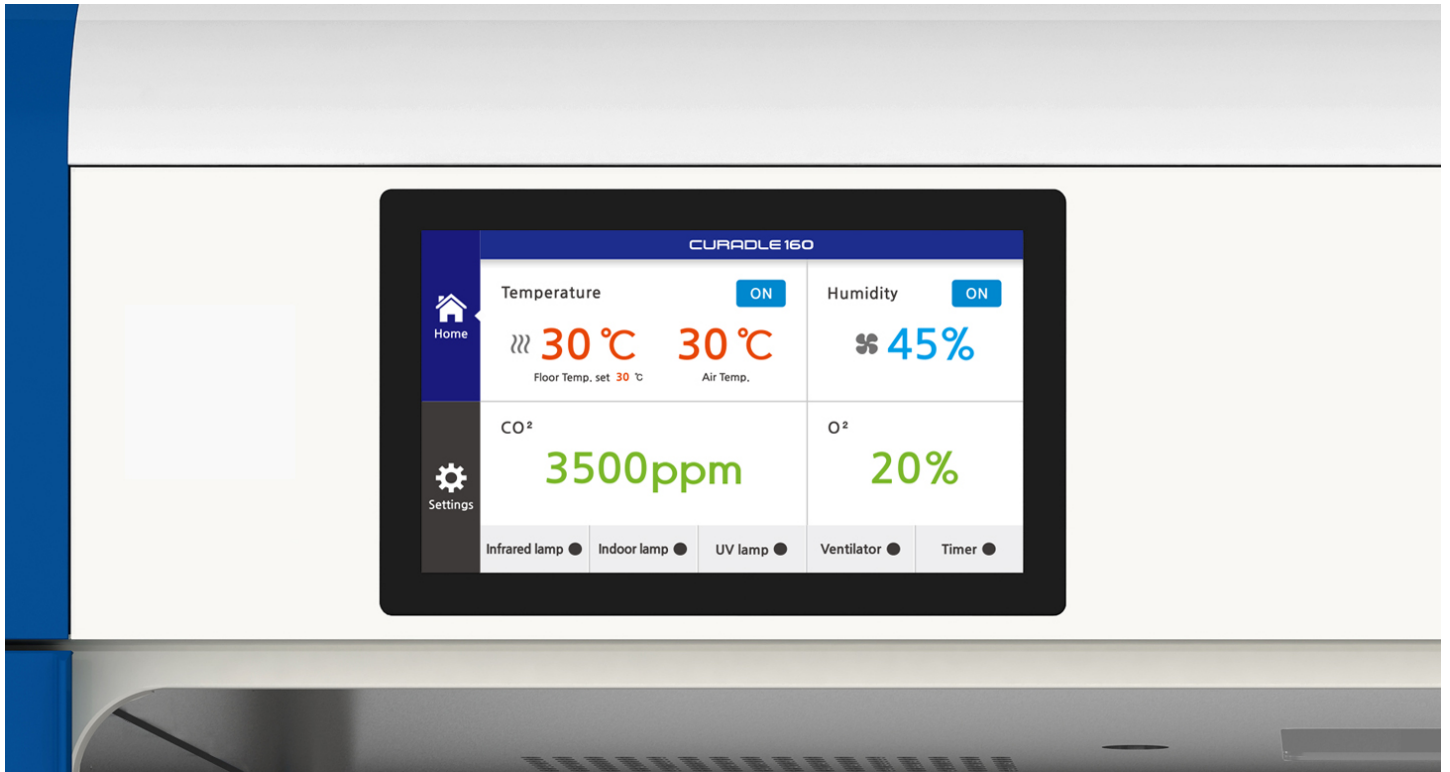




The diagram on the left illustrates a 'Double insulated structure' consisting of two layers: a top grey layer labeled 'Internal insulation' and a bottom yellow layer labeled 'External insulation'. Red arrows point upwards from the internal insulation layer, representing heat retention. To the right is a photograph of the ICU Intensive Care Unit incubator. The device is white with blue accents and features a digital display showing temperature (30.0°C), humidity (45%), and oxygen levels (3500ppm, 20%). It has two circular access ports on the front and a control panel on the right side.

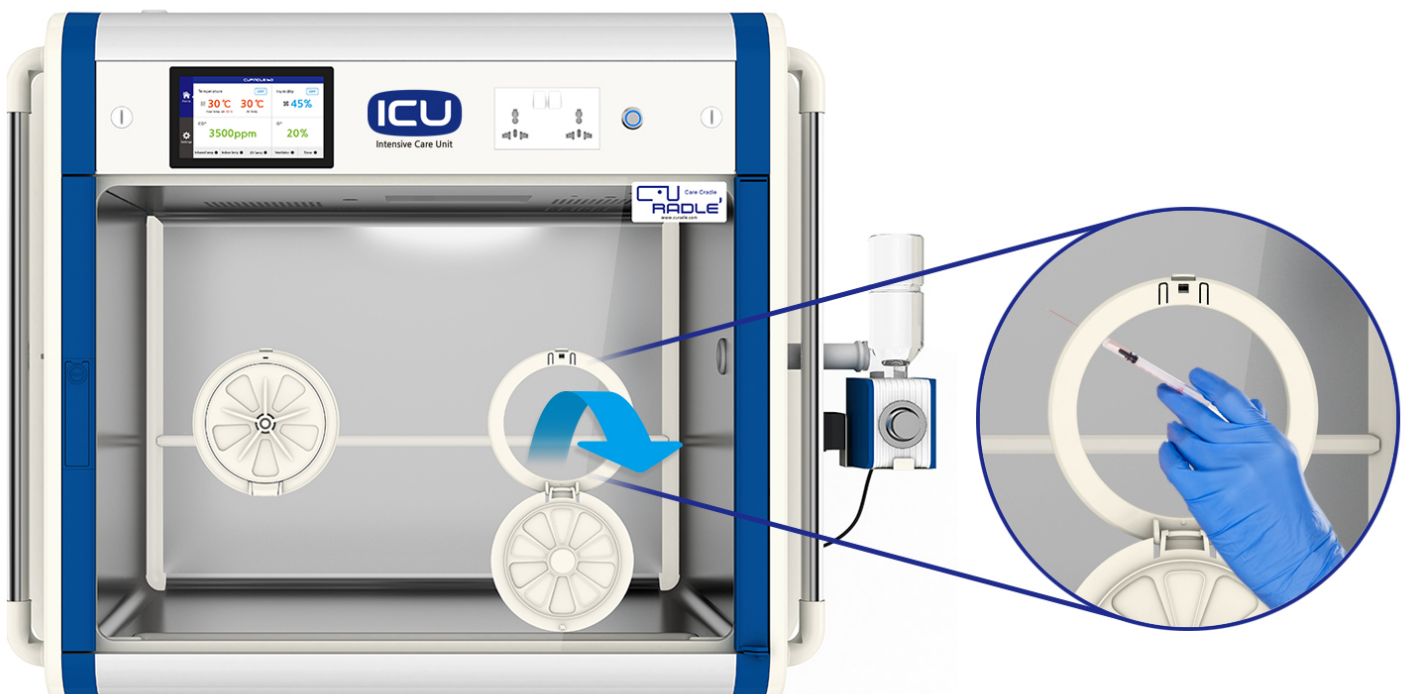
# Control and setting of oxygen, carbon dioxide concentration

High pressure oxygen chamber makes safe and effective pressurization possible with automatic ventilation system. **(Controls up to 40% of oxygen concentration)**  
Artificial intelligence electronic controller smartly controls the internal environment.

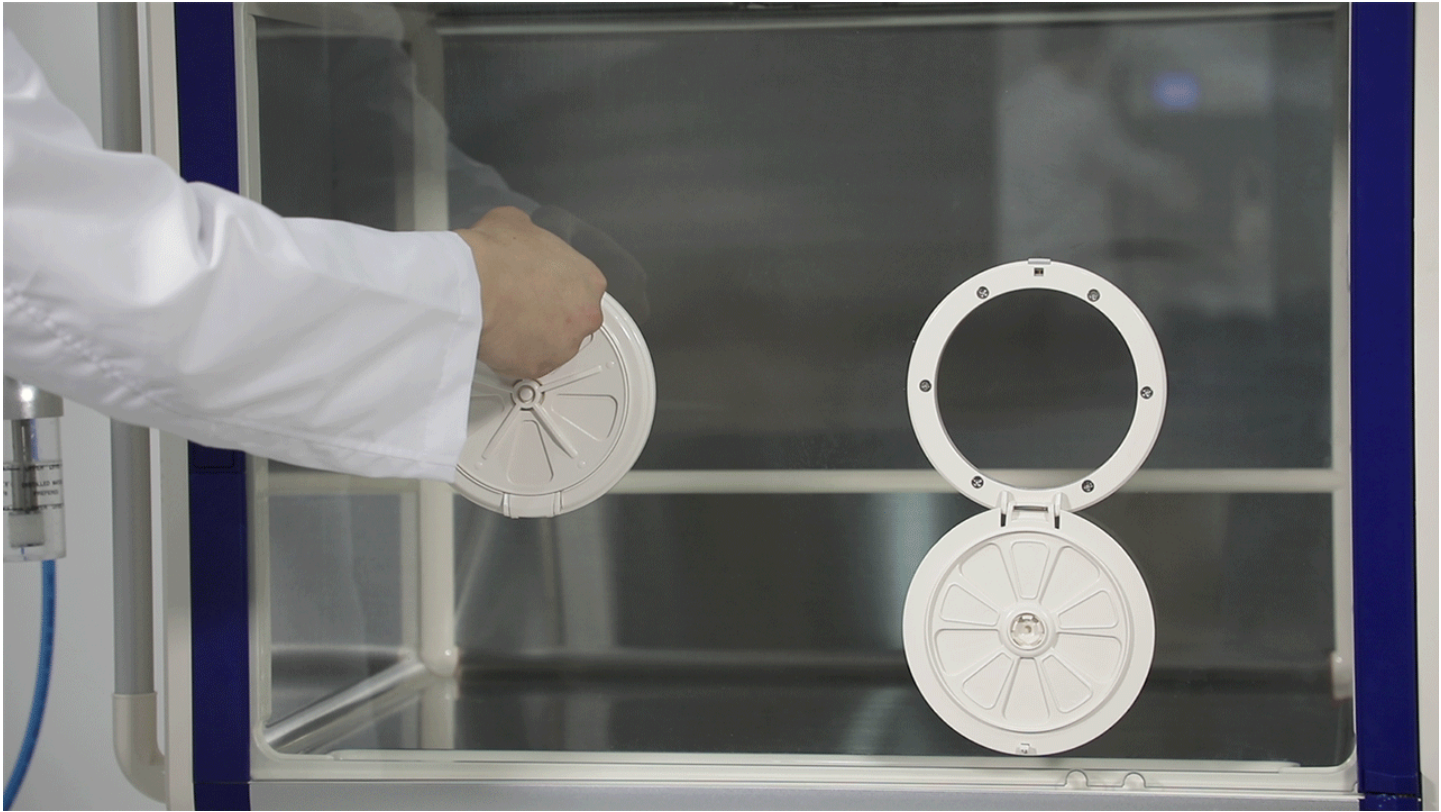


## Hand access for simple treatment

Hand access is to enable the pet treatment inside without opening the whole window. By turning the hand access, it is partially opened, and it can then be used as a vent.









# Stand pole and power external devices

Stand pole to easily install peripheral devices, with built-in outlet to power external devices.  
Optional : you can install additional peripheral devices with EX-POLE.



## Tempered glass view-window and one-touch door lock

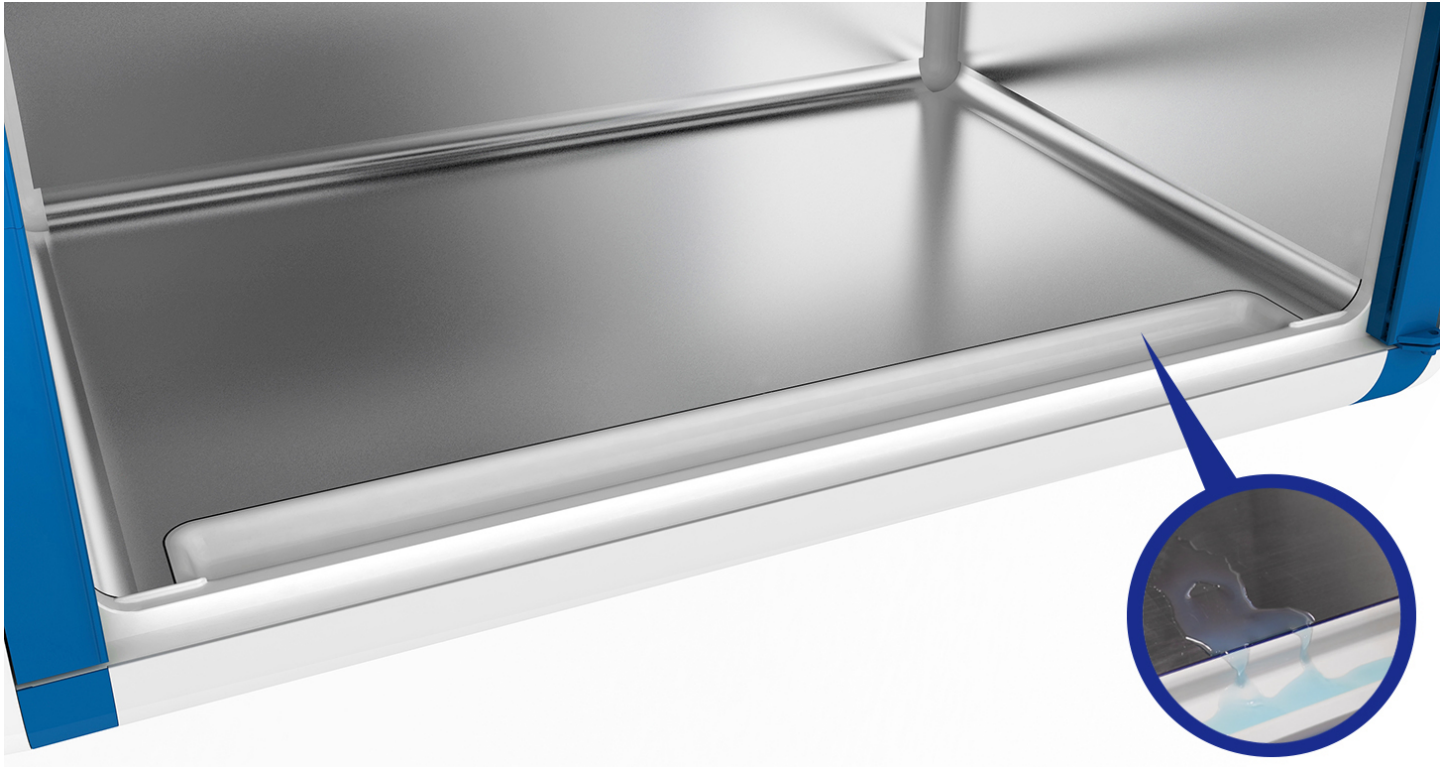
The tempered glass view-window helps to check the condition of the animals patient easily and the door lock is secured which cannot be opened by the pet from inside.





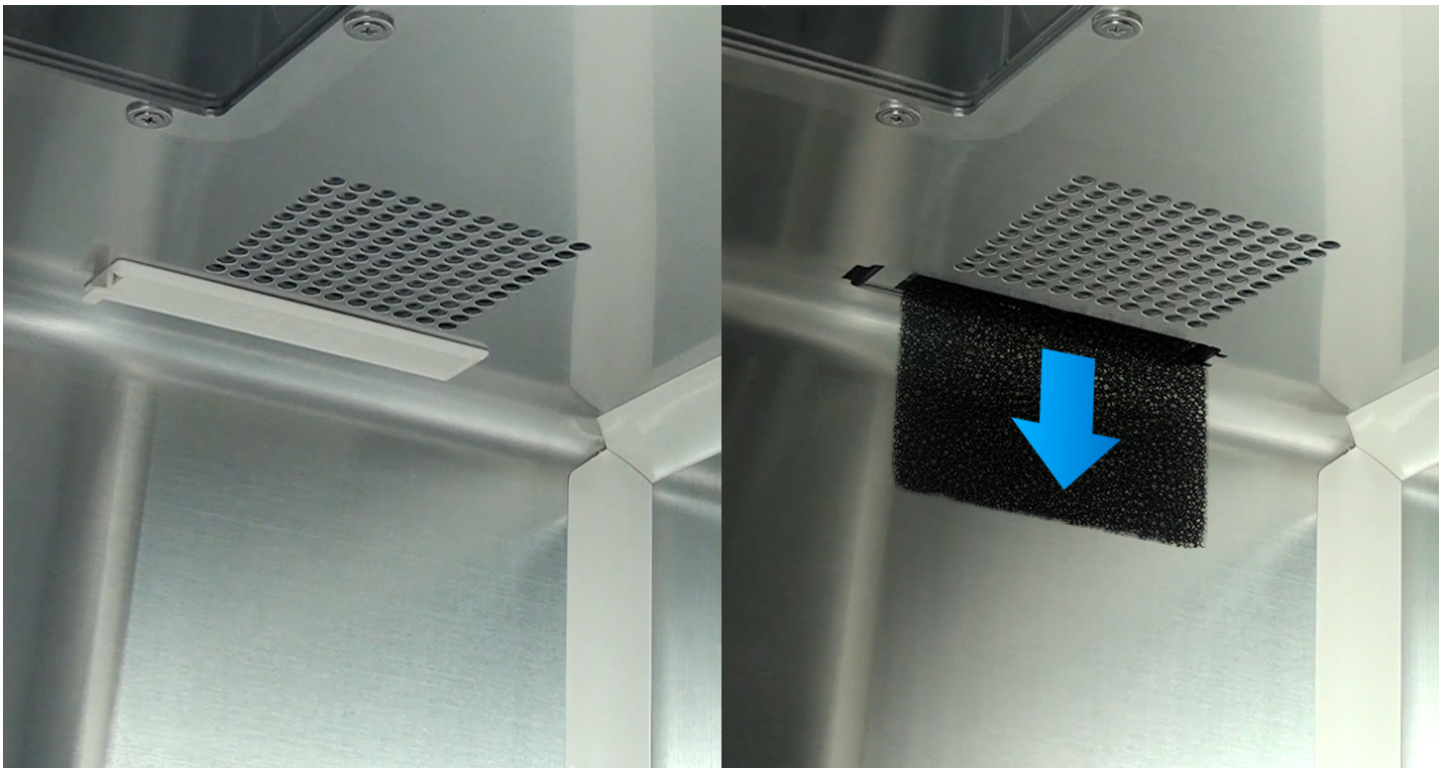
# Stainless steel chamber and waste tray

Stainless chamber to enhance durability and urine tray designed to gather in one place helps sanitation management conveniently.



## Clean Air-filter

Built-in filter out dust and impurities.  
It can be used several times with dense filter material and it easy to clean water.





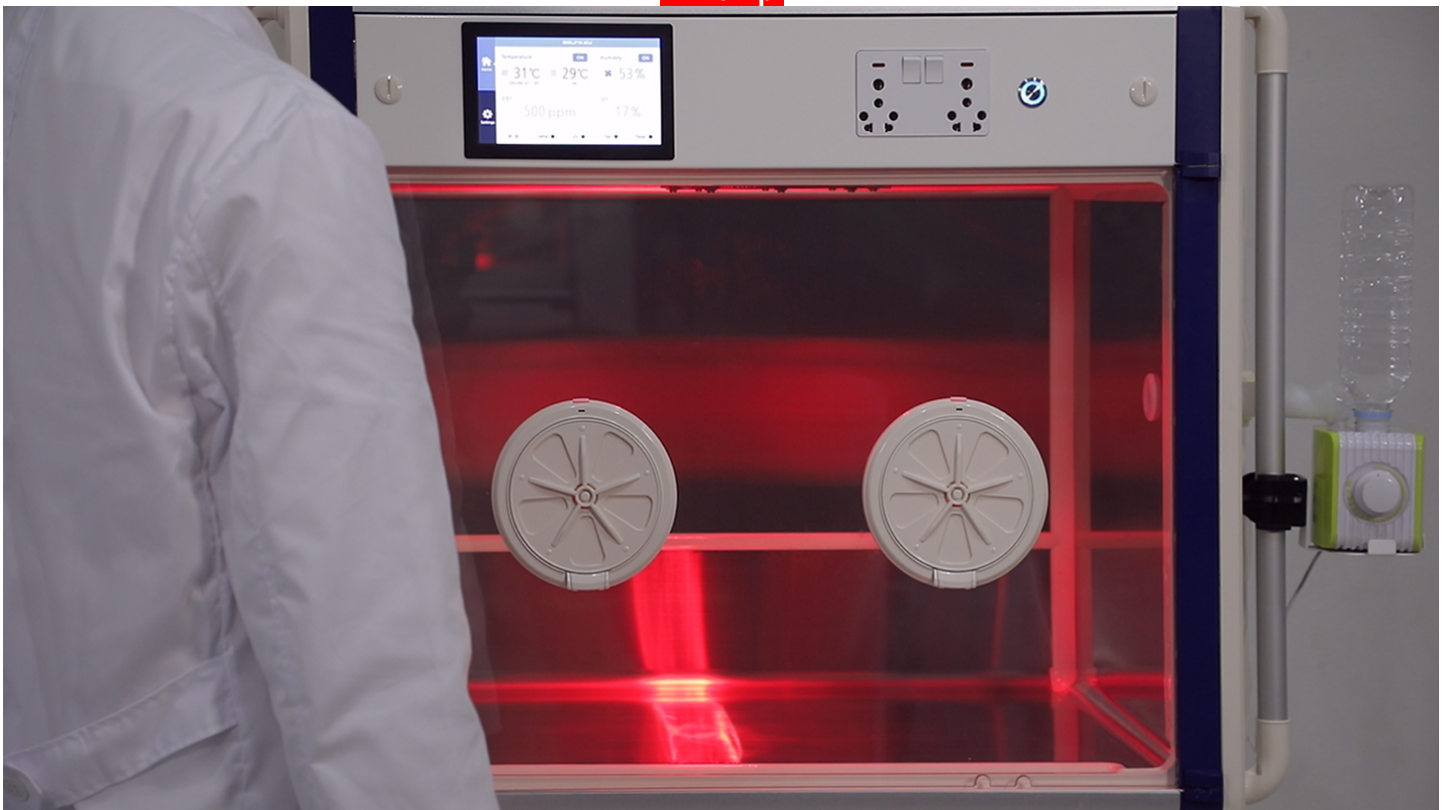
# Internal light, IR, UV-C Lamp

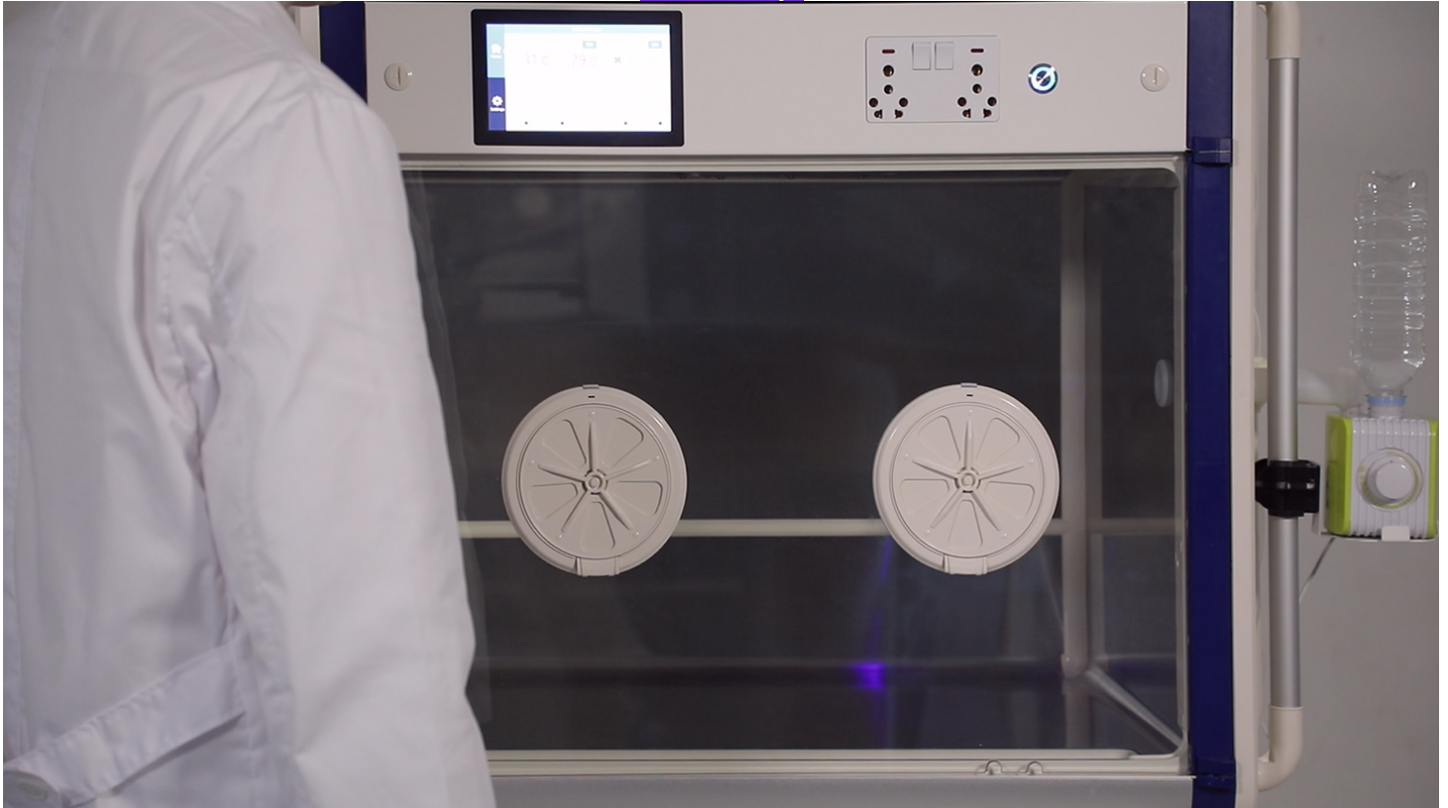
Built-in are 3 different kinds of lamps, the LED lamp is to brighten inside, an infrared heating lamp and also the UV-C lamp to disinfect. Quick button on the home screen for easy control of the three kinds of lamp.

Internal light (LED)



IR Lamp





## Large LCD screen, with quick buttons and multi language options

Touch screen for easy-to-use menu options provides optimal environment setting according to the health condition of animal patient.

\* 9 languages supported

(English, German, Spanish, Portuguese, Russian, Korean, Chinese, Japanese, Arabic)





# Treatment time settings and alarm function

Timer function allows you to set alarms such as treatment time and medication time.  
Also in case of device abnormality, (high temperature, high concentration of CO<sub>2</sub>)  
it sounds an alarm to inform you of the status.



\* Illustration picture is just to help understand, Curadle Pet Brooder does not able to set timer or alarm.

## IP camera

Built-in IP camera to check real-time inside video on mobile.  
\* WiFi connection required.





# How to place CURADLE

Installation applicable together with Curadle Pet Brooder.









## Specifications by Model

Function / Model No.	PRO+ 160 [PX-ICU160+(T) / PX-ICU160+(G) / PX-ICU160C(T) / PX-ICU160C(G)]	PRO 160 [PX-ICU160]	MAX 160 [MX-ICU160]
Display	LCD(Touch)	LCD(Touch)	FND
Air temperature indicator	O	O	X
Floor temperature indicator and 3 ways of heating (Control Range: Room temperature ~ Max 50°C)	O	O	O
Floor Cooling System (Control Range: 15°C ~Room temperature)	O	X	X
Oxygen concentration control function (Control range: MAX. 40%)	O	X	X
IP Camera	Model PX-ICU160C(T), PX-ICU160C(G) only	X	X
Carbon dioxide indicator and automatic carbon dioxide emission (Control range: MAX. 4000ppm)	O	O	X
Automatic humidity emission	O	O	O
Humidity system (Display Range: MAX. 70%)	O	O	O
Treatment time settings and alarm function (Control range: 0~24Hour, 1minute unit)	O	O	X
Control Fan speed (Control range: 40~100%)	O	O	X
Alarm for high concentration of carbon dioxide	O	O	X
Alarm for abnormal high temperature	O	O	X
Multi-language display and controls (English, German, Spanish, Portuguese, Russian, Korean, Chinese, Japanese, Arabic)	O	O	X
IV stand holder hole	O	O	X
UVC Lamp	O	O	X
IR Lamp	O	O	O
LED Lamp	O	O	O
Ventilation device	Automatic	Automatic	Semi-automatic
Waste Tray	O	O	O
Stand Pole to easily install various devices	O	O	O
Tempered glass door	O	O	O
Hand access window	O	O	O
External outlet (2 outlets)	O	O	O
Air filter	O	O	O
Leakage circuit breaker	O	O	O
Fixed rubber feet	O	O	O

※ To improve the performance of the product, specifications are subject to change without prior notice.

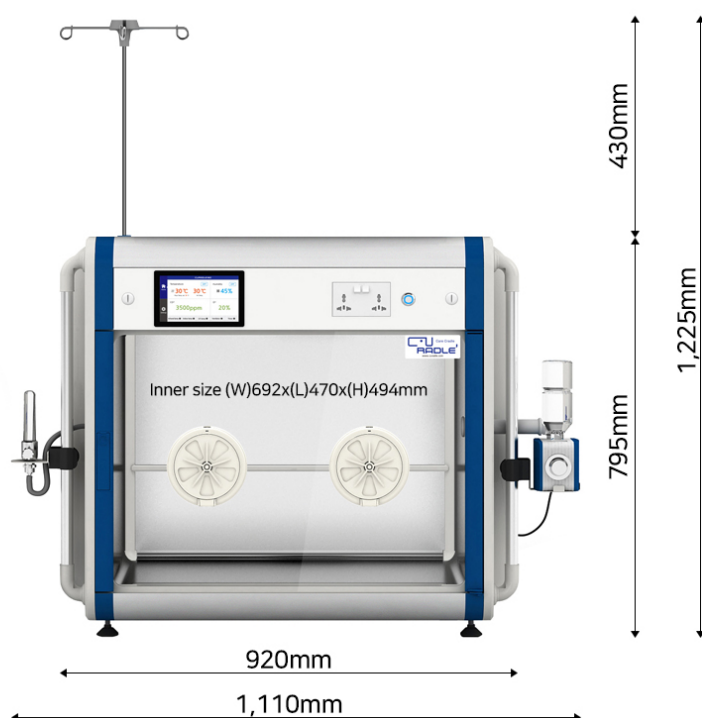


## Inner size reference guide

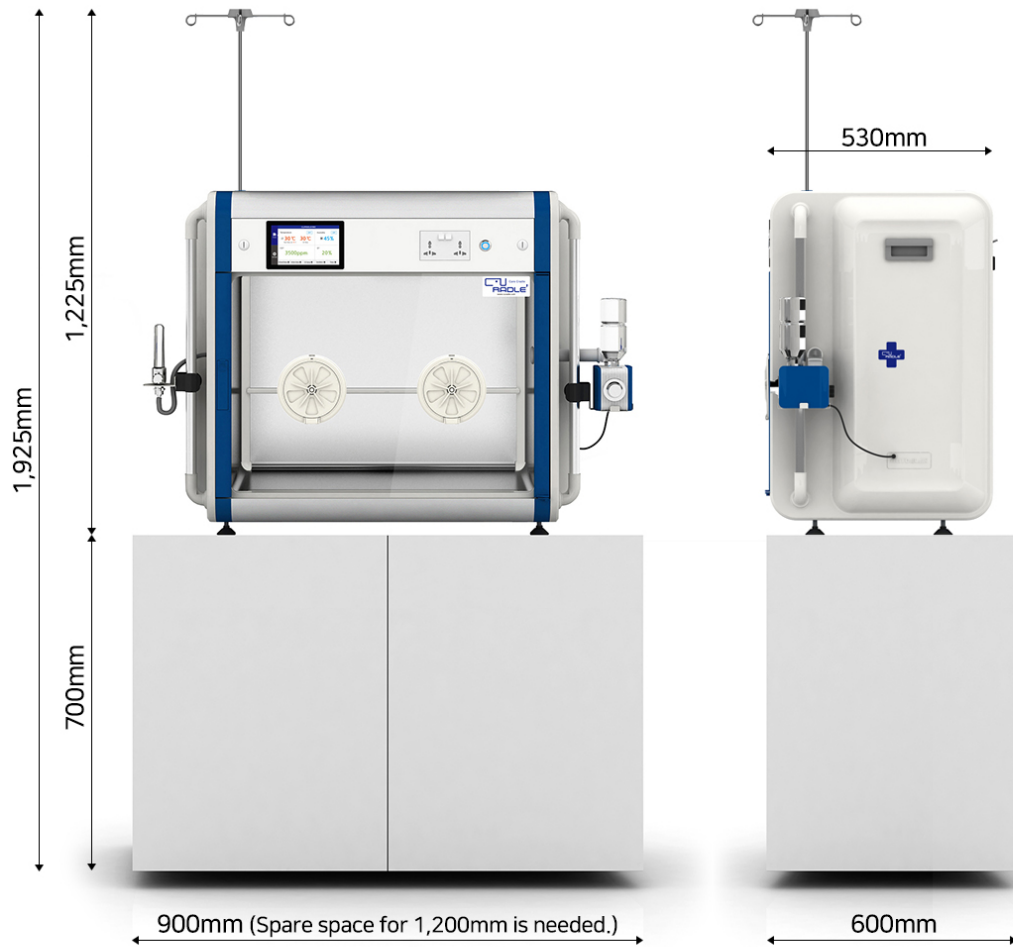


\* There may be differences depending on the animal species and size.

## To place alone



## To place for 1 stack



\* When the height of the installation space is not enough, the height of the cabinet has to be adjusted, there must be at least 150mm of space from the top of the ICU machine to the ceiling.

## To place for double stack

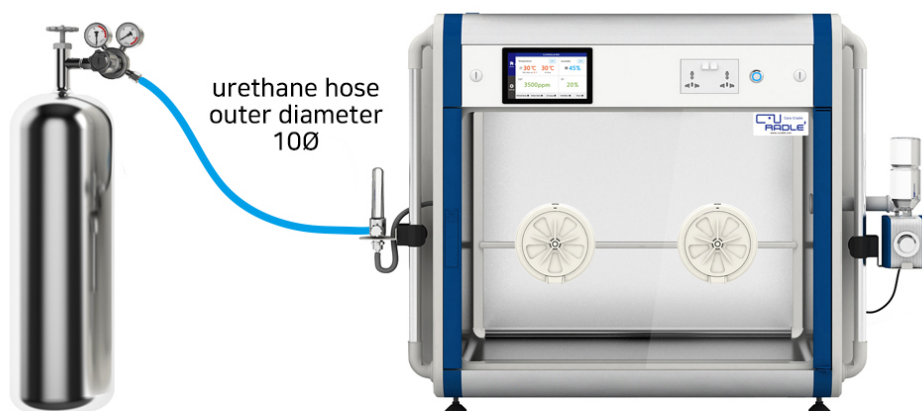




\* When the height of the installation space is not enough, the height of the cabinet has to be adjusted, there must be at least 150mm of space from the top of the ICU machine to the ceiling.

### How to connect with oxygen tank

Oxygen tanks must be equipped with a regulator in the front.







#### SPECIFICATION

Name	CURADLE SMART INCUBATOR PRO+ 160
Model NO.	* For oxygen tank : PX-ICU160+(T) * For oxygen generator : PX-ICU160+(G) * For oxygen tank / IP camera included : PX-ICU160C(T) * For oxygen generator / IP camera included : PX-ICU160C(G)
Temp. Control	MAX. 50°C / 122°F
External environment temp.	Optimum range 20 ~ 25°C / 68 ~ 77°F
Humi. Control	MAX. 70%
External environment humi.	MAX. 60%
Oxygen concentration control	MAX. 40%
Carbon dioxide concentration control	MAX. 4000ppm
Display	LCD (Touch screen)
Power	AC 100-120V, 50/60Hz / AC 220-240V, 50/60Hz
Power consumption	Average 95W
Size	External : (W)916 x (L)532 x (H)768mm Internal(Capacity) : (W)692 x (L)470 x (H)494mm / Capacity 160L
Weight	57kg(N.W.) / 63kg(G.W)

#### BASIC PRODUCT INFORMATION

Manufacturer	AUTOELEX CO., LTD.
Country of manufacture	KOREA

##### \* Paid repair

- Failure of function, performance by consumer's intention, mistake
- If a malfunction occurs due to natural disasters (fire, salt, gas, earthquake, flood, etc.)
- If replacing consumable parts that are normally worn in use
- If a fault occurs due to abnormal power supply or defective connection equipment
- If a failure occurs due to repair or alteration made by a person other than the repair agent of the head office or agency
- Other external causes not the fault of the product itself
- If a fault occurs due to different rated voltage
- If failure occurs due to use of unspecified consumables or optional parts not specified by our company
- In case of failure or damage due to dropping when moving etc
- Failure caused by non-cleaning
- If the malfunction / consumer error caused by wrong operation of the machine is obvious
- Failure during use in a manner not described in the manual

\* The manufacturer or distributor is not responsible for any life loss or property damage caused by user's carelessness, alteration, change of purpose, power failure, natural disaster, etc. To avoid errors, please read the user's manual carefully before use.

### AUTHORISED DISTRIBUTOR



- OFFICE : 1066, Civil Lines, Station Road  
Jhansi, U.P-284001, INDIA
- Contact : +91-9559777053
- E-MAIL : thepetsnation@gmail.com  
info@petsnation.in
- Website : www.petsnation.in

CLICK ON DISTRIBUTOR TO CONTACT ON WHATSAPP